

LM7000 SD/HD/3G Monitor Series

7000 series: a new landmark in monitoring

LM7000 SERIES
SD/HD/3G Monitors



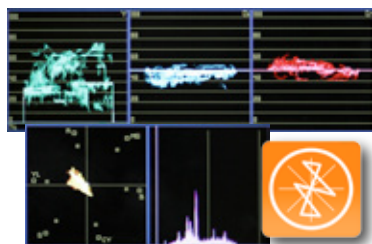
MAIN NEW FEATURES

The 7000 series from KROMA includes new functions to increase the signal monitoring capabilities: new inputs, camera calibration functions and improved features; setting a new landmark in broadcast monitoring.



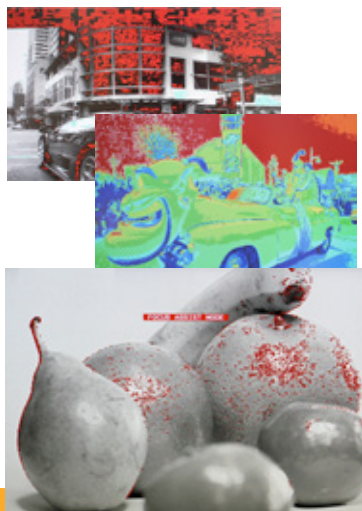
The DVI-I and the new HDMI inputs, included by default, provide direct connection with compatible cameras, multiviewers, PCs and analogue component video signals.

The SD-SDI input is active by default, while the rest of video inputs (composite and HD/3G-SDI), are optional and license activated.



New tools have been included to assist in the signal monitoring, such as independent waveforms for Y, Cb and Cr, vectorscope and histogram, displayed in different colours for a quick identification of each tool.

It is possible to select the line of the signal for a more precise analysis of the picture.

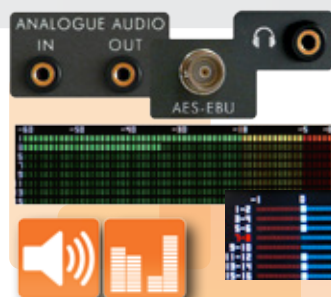


The camera calibration tools support correct camera settings:

- With *luma check*, the picture is generally displayed in b/w, and out of range luminance values (below 16 or over 235) are coloured in red (underexposure) or blue (overexposure).

- With *false colour*, the range of luminance values is scaled in ten different levels and displayed with different colours, making the luminance adjustment easier at extreme lighting conditions.

- With *focus assist*, the focused edges are highlighted when matching a certain level of sharpness (configurable by menu).



Audio monitoring is possible thanks to the different input options (analogue and SDI-embedded) and outputs (analogue, digital AES-EBU, headphones and stereo built-in speakers).

The on-screen meters, configurable in size and transparency, display up to 16 channels in different scales*

The audio phase indicator shows the phase relationship between left and right channels, with special signaling when channels are in phase.

* dBFS, BBC, DIN, Nordic, STD, NA, FRA, EBU



More than one signal may be monitored at once with PIP (Picture-in-Picture) and PbP (Picture-by-Picture) functions. PbP displays two inputs side by side in original aspect ratio, full screen and half of each input.

The new Dual-split displays two inputs and the corresponding WFM, vectorscope, IMD and tally info. A built-in dual splitter with no extra cost.



Pixel mapping shows the real pixels of pictures with no downscaling involved (1:1 resolution). In 9" and 18.5" monitors, FullHD signals are "zoomed" and a browser allows to select and display different areas of the image.



The 7000 series monitors' displays feature IPS (In-Plane Switching) technology, improving viewing angles and colour reproduction over regular LCD displays.



High resolution dynamic in-monitor displays (IMD) are available on-screen through serial protocol. Additionally, the tally info (on screen or lamp) can be received serially or through contact closure.

It is possible to control the monitors remotely thanks to a Ethernet port and the PC based KROMA Monitor Controller software.

Markers and safety area function have been greatly improved. Also including new markers, i.g. cinema formats, all compatible with the rest of on-screen functions.